

241 Deansgate, Manchester, Lancashire, M3 4EL
Tel: 0161 637 8336
Email: contactus@ascendproperties.com
www.ascendproperties.com

Ascend

Built on higher standards



Pulse Apartments, Manchester Street, Manchester

£1,000 PCM

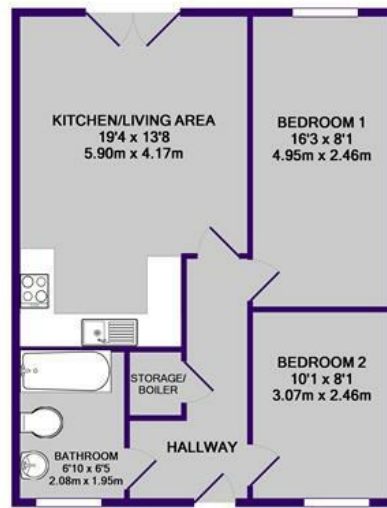
AVAILABLE NOVEMBER 2024 - This two bedroom apartment in The Pulse, an uber-popular gated development, is the perfect abode for someone who wants to have it all. With its modern kitchen, sleek bathroom, secure parking and gorgeous landscaped communal gardens, what more could you want?

We haven't even mentioned the location yet. Perfectly placed just a five minute walk from Trafford Bar Metrolink, the entire city is literally at your fingertips. MediaCityUK and Manchester city centre are a short tram ride away and Castlefield is just a ten minute stroll. Salford Quays also offers a wide range of amenities from bars, restaurants and shopping, to arts, theatres and museums – there's no wonder that Manchester was recently voted the trendiest city in the UK.

Demand for property in this location is high and we guarantee that this apartment will not be on the market for long. If you fancy a closer look, contact us today to book a viewing. And just so you know, the pictures used in this advert are not of the apartment, so fixtures and fittings vary.

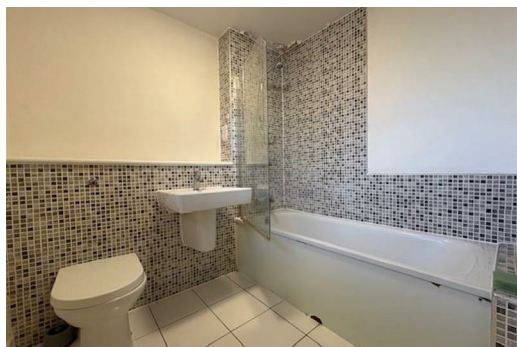
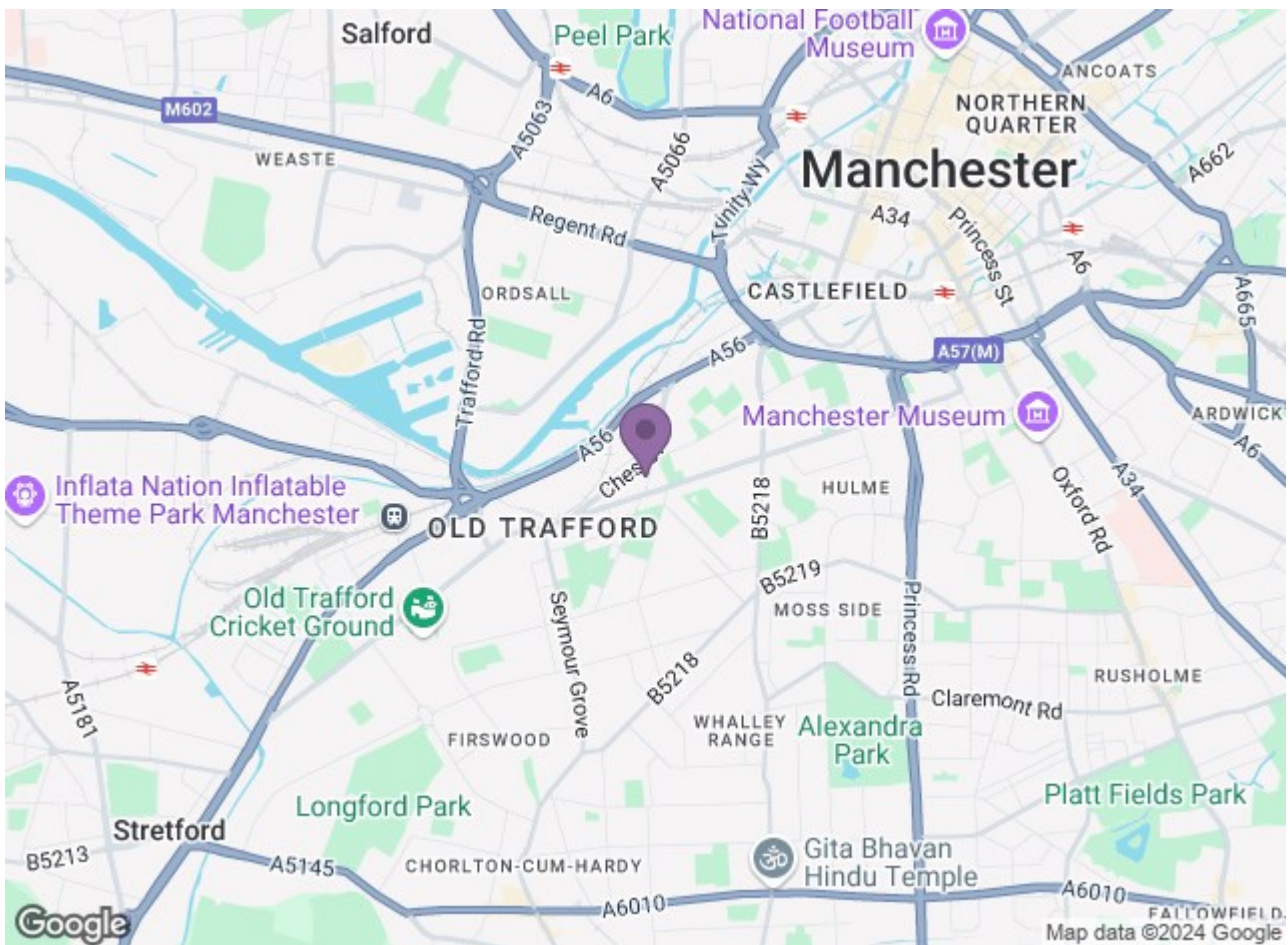
Available 25th November 2024
12 Month Minimum tenancy
Deposit: £1150
Tax Band: B





TOTAL APPROX. FLOOR AREA 602 SQ. FT. (55.9 SQ. M.)

Whilst every attempt has been made to ensure the accuracy of the floor plan contained here, measurements of doors, windows, rooms and any other items are approximate and no responsibility is taken for any error, omission, or mis-statement. This plan is for illustrative purposes only and should be used as such by any prospective purchaser. The services, systems and appliances shown have not been tested and no guarantee as to their operability or efficiency can be given.
Made with Metropix ©2016



| Energy Efficiency Rating | | Environmental Impact (CO ₂) Rating | |
|------------------------------|-----------|--|-----------|
| Current | Potential | Current | Potential |
| 69 | 69 | 74 | 74 |
| Energy Efficiency Rating: 69 | | Environmental Impact (CO ₂) Rating: 74 | |
| England & Wales | | England & Wales | |